



SEAWATER DESALINATION

DESALIACE

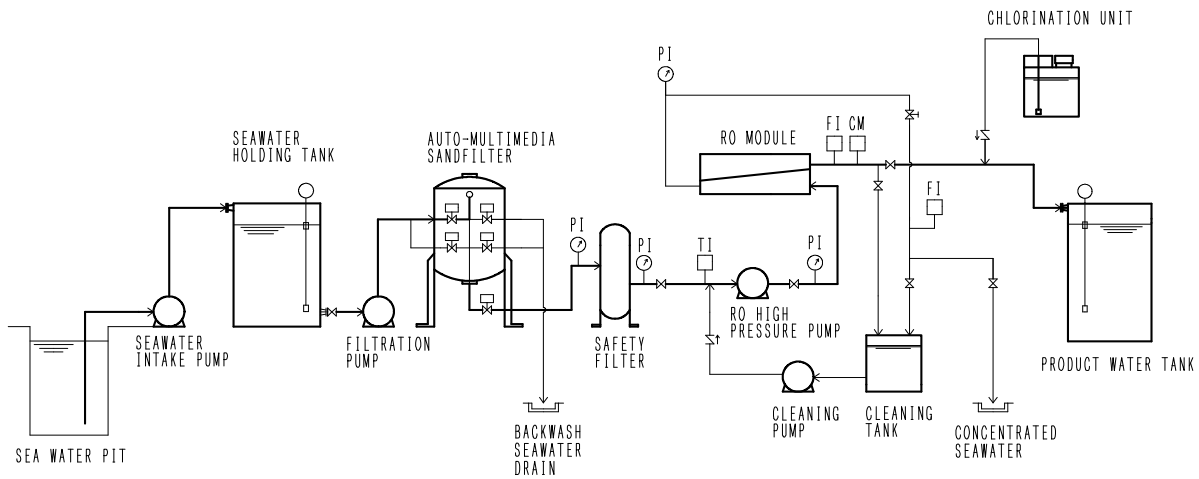
**エース技研株式会社
ACEGIKEN CO.,LTD.**

1 PASS RO SEAWATER DESALINATION UNIT

Most popular unit : Model "DESALIACE 500 Series"



FLOW DIAGRAM OF 1 PASS RO SEA WATER DESALINATION SYSTEMS



Detail Specification of Model DESALIACE, Type 500 Series

Product Water quality : 500mg/l/TDS or less

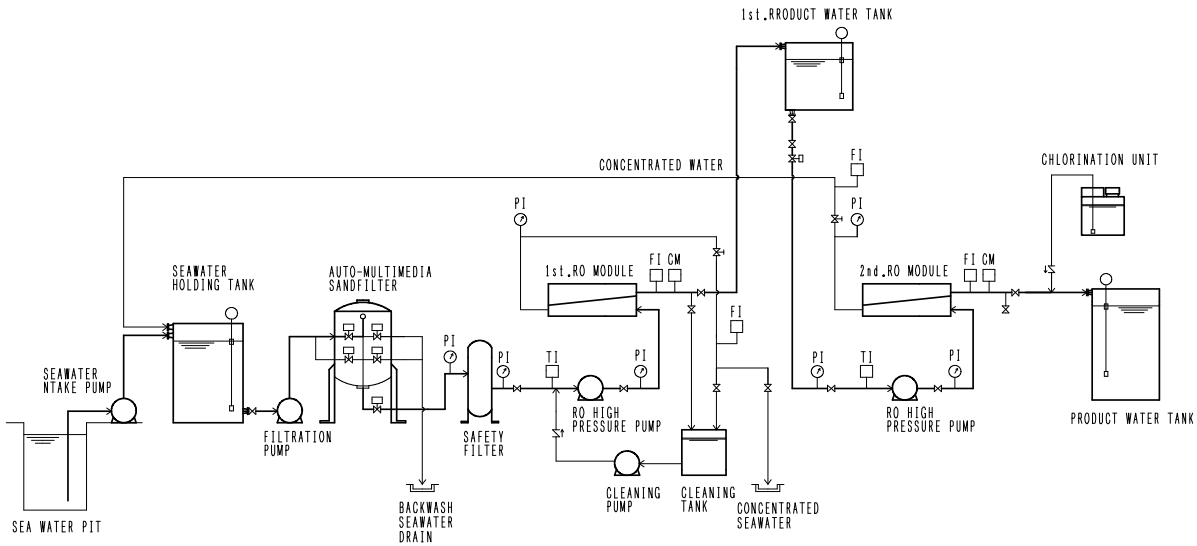
Model NO.	Product Water Capacity(m ³ /h)	Intake Seawater Volume(m ³ /h)	Recovery (%)	Motor (kW)	Dimension D × W × H(mm)
ASRO-0805-50	2.1 (50m ³ /D)	6.0 (140m ³ /D)	35	11.0	1400x5500x1800
ASRO-0808-80	3.3 (80m ³ /D)	9.6 (230m ³ /D)	34.4	22.0	1500x5500x1800
ASRO-0810-100	4.2 (100m ³ /D)	12.1 (290m ³ /D)	34.7	37.0	1500x5500x2100
ASRO-0815-150	6.25 (150m ³ /D)	18.0 (430m ³ /D)	34.7	45.0	1500x7500x1800
ASRO-0820-200	8.4 (200m ³ /D)	24.2 (580m ³ /D)	34.7	49.0	1500x7500x2100
ASRO-0825-250	10.5 (250m ³ /D)	30.2 (720m ³ /D)	34.8	55.0	1750x7500x2100
ASRO-0830-300	12.5 (300m ³ /D)	36.3 (875m ³ /D)	34.5	75.0	1750x7500x2100
ASRO-0842-400	16.8 (400m ³ /D)	48.3 (1155m ³ /D)	34.8	90.0	2200x7500x2100

2 PASS RO SEAWATER DESALINATION UNIT

For Drinking Water Unit : Model "DESALIACE 100 Series"



FLOW DIAGRAM OF 2 PASS RO SEA WATER DESALINATION SYSTEMS



Detail Specification of Model DESALIACE, Type 100 Series

Product Water quality : 100mg/l/TDS or less

Model NO.	Product Water Capacity(m ³ /h)	Intake Seawater Volume(m ³ /h)	Recovery (%)	Motor (kW)	Dimension D × W × H(mm)
ASRO-0806D02-50	2.1 (50m ³ /D)	6.86 (160m ³ /D)	30.6	11.0+3.0	1400x5500x1800
ASRO-0808D03-80	3.3 (80m ³ /D)	10.56 (250m ³ /D)	31.3	22.0+4.0	1500x5500x2100
ASRO-0810D04-100	4.2 (100m ³ /D)	13.36 (320m ³ /D)	31.4	37.0+4.0	1750x5500x1800
ASRO-0815D06-150	6.25 (150m ³ /D)	19.7 (470m ³ /D)	31.7	45.0+5.5	1500x7500x2100
ASRO-0820D08-200	8.4 (200m ³ /D)	26.38 (630m ³ /D)	31.8	49.0+7.5	1750x7500x2100
ASRO-0825D10-250	10.5 (250m ³ /D)	32.98 (790m ³ /D)	31.8	55.0+11.0	1750x7500x2100
ASRO-0830D12-300	12.5 (300m ³ /D)	39.28 (940m ³ /D)	31.8	75.0+11.0	1750x7500x2100
ASRO-0842D15-400	16.8 (400m ³ /D)	52.77 (1260m ³ /D)	31.8	90.0+15.0	2200x7500x2100

WATER QUALITY

Item	Chemical Symbol	Sea Water	1 Pass Product Water	2 Pass Product Water
TDS	TDS	35,816mg/L	154.50mg/L	18.35mg/L
Chloride	CL-	19,950mg/L	92.47mg/L	11.01mg/L
Sodium	Na	10,837mg/L	57.75mg/L	6.97mg/L
Calcium	Ca	440mg/L	0.47mg/L	0.03mg/L
Magnesium	HCO3	1,310mg/L	1.41mg/L	0.10mg/L
Bicarbonate	Na	150mg/L	0.96mg/L	0.17mg/L
Sulfuric Acid	SO4	3,100mg/L	1.41mg/L	0.07mg/L
Silica	SiO2	2.7mg/L	0.02mg/L	0.00mg/L
pH	pH	8.2	7.3	6.4

The above water quality is calculated by computer only for reference and not only guaranteed.



エース技研株式会社

本 社 〒259-1135 神奈川県伊勢原市岡崎6498-1
 TEL 0463-97-4130 FAX 0463-97-4140
 九州事業所 〒811-1213 福岡県筑紫郡那珂川町中原2-42
 野田ビル4F
 TEL 092-951-2370 FAX 092-951-2380
 URL <http://www.acegiken.co.jp>

Ace Giken Co.,Ltd.

Head Office: 6498-1, Okazaki, Isehara City, Kanagawa-Pref.
 259-1135, Japan
 TEL:+81(0)463-97-4130 FAX:+81(0)463-97-4140
 Kyusyu Branch Office: 4F Nodabuilding, 2-42, Nabaru, Nakagawa-Town,
 Tikushi-County,Fukuoka-Pref.
 811-1213, Japan
 TEL:+81(0)92-951-2370 FAX:+81(0)92-951-2380
 URL <http://www.acegiken.co.jp>